

Pressure gauge adaptor

for pressure gauges and transmitters

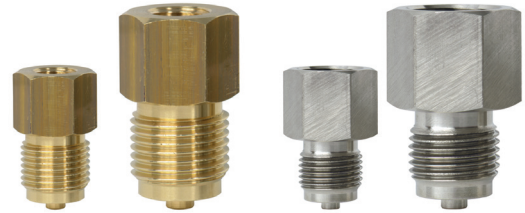
in brass or stainless steel

E 09.07.01

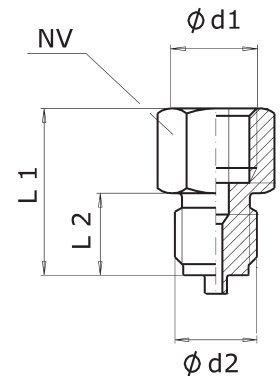
Ed.22.01

Pressure gauge adaptor

Pressure gauge adaptor for reducing or enlarging the thread of a pressure gauge or pressure transmitter. Material brass or stainless steel 1.4571. The adaptor has to be completed with a sealing washer.



Type	Female d1	Male d2	Material	L1	L2	NV	Code
9092	G1/8"	G1/4"	brass	28	10	14	90920000
9020	G1/8"	G1/2"	brass	35	10	22	90200000
9021	G1/4"	G1/8"	brass	29	13	17	90210000
9022	G1/4"	G3/8"	brass	33	13	19	90220000
8092	G1/4"	G3/8"	SS 2343	33	13	19	80920000
9023	G1/4"	G1/2"	brass	38	13	22	90230000
9223	G1/4"	G1/2"	1.4571	38	13	22	92230000
9024	G1/4"	M12x1,5	brass	32	13	17	90240000
8090	G1/4"	1/4"NPT	brass	28	13	17	80900000
8091	G1/4"	1/4"NPT	SS 2343	28	13	17	80910000
9025	G3/8"	G1/4"	brass	36	16	22	90250000
9026	G3/8"	G1/2"	brass	43	16	22	90260000
9027	G1/2"	G1/4"	brass	41	19	27	90270000
9226	G1/2"	G1/4"	1.4571	41	19	27	92260000
9227	G1/2"	1/4"NPT	1.4571	43	19	27	92270000
9028	G1/2"	G3/8"	brass	45	19	27	90280000
9228	G1/2"	G3/8"	brass	45	19	27	92280000
9229	G1/2"	1/2"NPT	1.4571	44	19	27	92290000
9230	1/2"NPT	G1/2"	1.4571	44	19	27	92300000
9029	G1/2"	G3/4"	brass	45	19	27	90290000
9030	G1/2"	M12x1,5	brass	41	19	27	90300000
9031	G1/2"	M20x1,5	brass	46	19	27	90310000
9231	G1/2"	M20x1,5	1.4571	46	19	27	92310000



Working pressure

Brass PN 600 bar at medium temperature max +60°C

Stainless steel PN 1000 at medium temperature max +200°C